



Powering the **Translation** Network

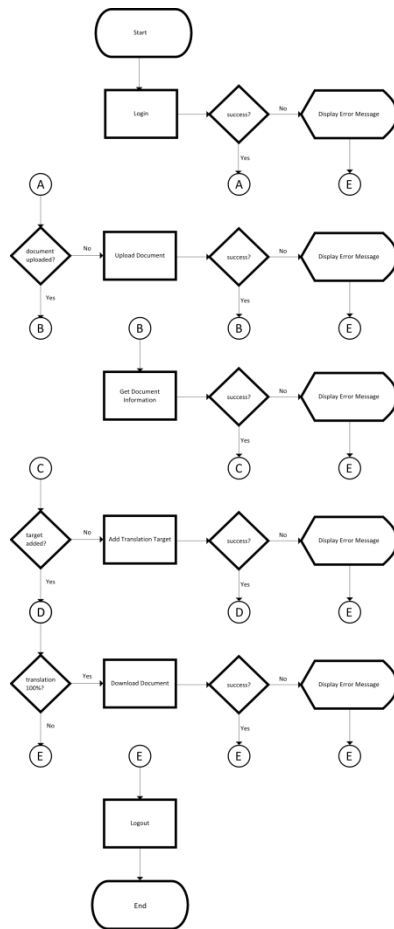
Lingotek Inside

Sample Integration – API v3.0



Overview

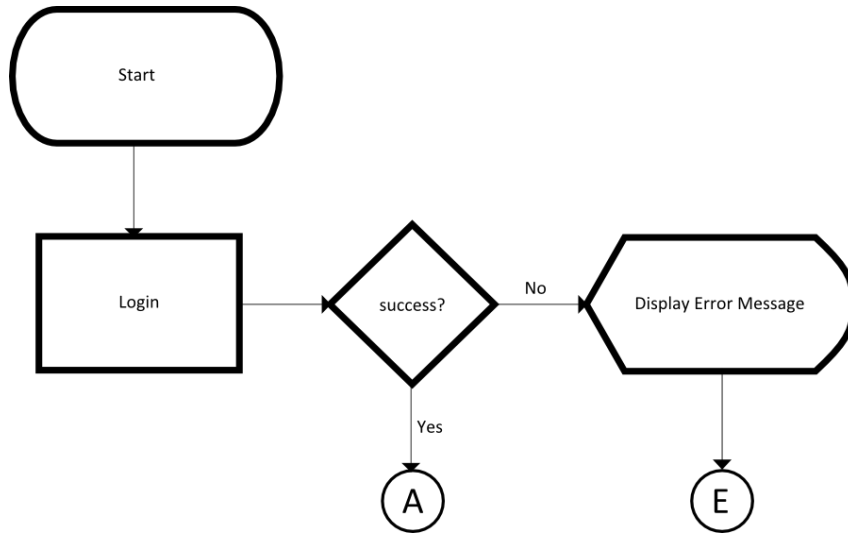
Diagram



Strategy

- » This is a simple integration example
- » Documents will be uploaded automatically
- » Translation will be done independently on the Lingotek platform
- » Documents will be downloaded automatically

Step 1: API Login



» Method: login

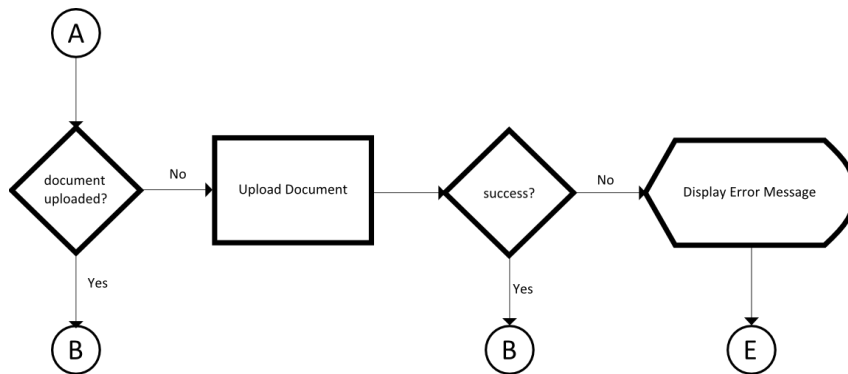
<http://lingotek.com/node/207#login>

parameters	response
userLogin password version returnXML (optional) community (optional)	results

Step 2: Document Upload

» Method: addDocumentWithTargets

<http://lingotek.com/node/207#addDocumentWithTargets>



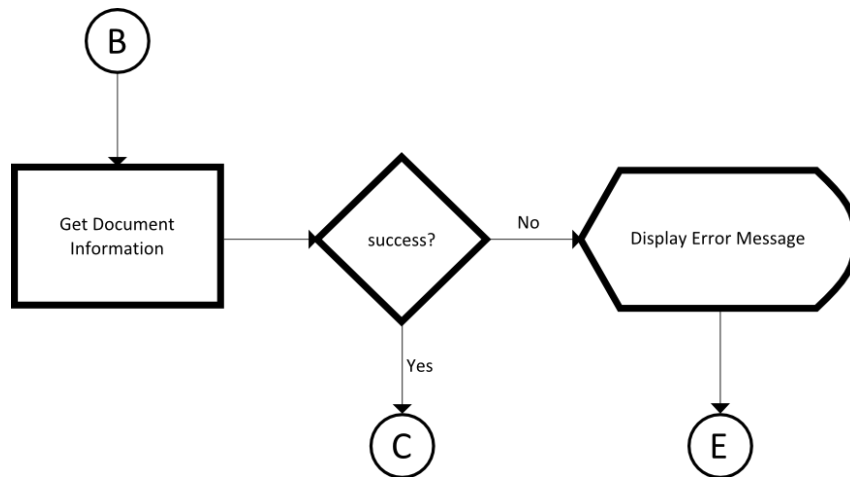
parameters

projectId
file
documentName
format
encoding
phaseTemplateId
sourceLanguage
targetLanguage
tmVaultId
tmTarget (optional)
zipFile (optional)

response

results
id
name
description
sourceCharacterCount
sourceWordCount
sourceSentenceCount
uniqueWordCount
uniqueSentenceCount
duplicateWordCount
duplicateSentenceCount

Step 3: Check State



» Method: getDocument

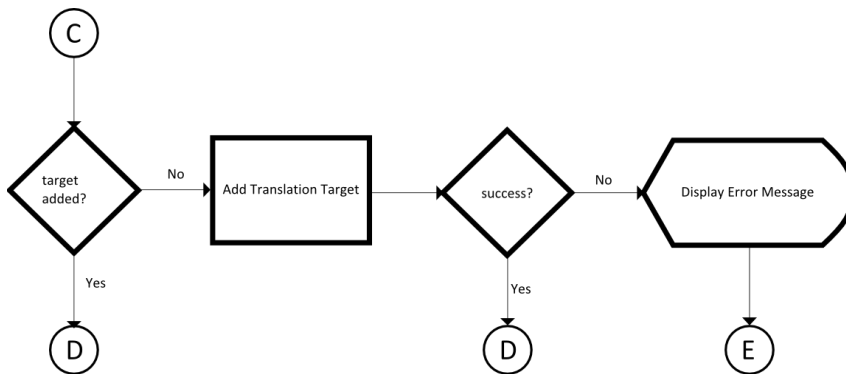
<http://lingotek.com/node/207#getDocument>

parameters	response
documentId	results id name description sourceLanguage tmVaultId percentComplete sourceCharacterCount sourceWordCount sourceSentenceCount uniqueWordCount uniqueSentenceCount duplicateWordCount duplicateSentenceCount translationTargets[id language dueDate percentComplete matchSentences matchWords

Step 4: Add Target

» Method: addTranslationTarget

<http://lingotek.com/node/207#addTranslationTarget>



parameters

documentId
targetLanguage

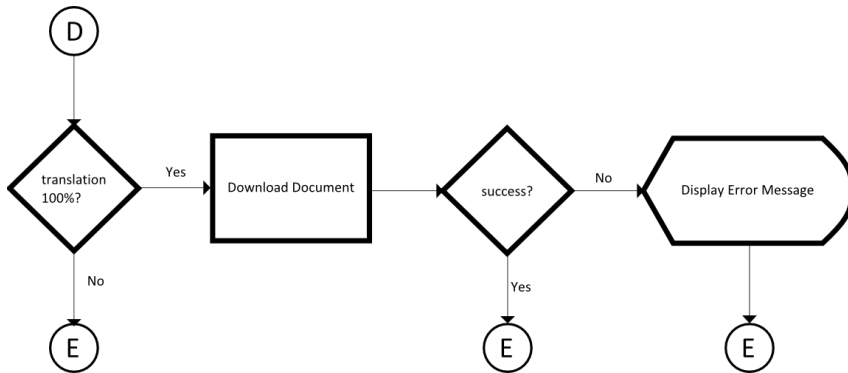
response

results
id
targetLanguage

Step 5: Document Download

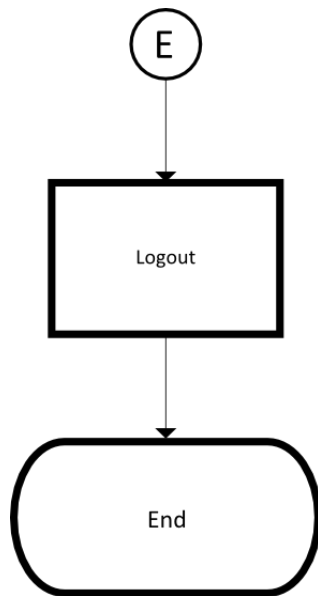
» Method: downloadDocument

<http://lingotek.com/node/207#downloadDocument>



parameters	response
documentId targetLanguage	results

Step 6: API Logout



» Method: logout

<http://lingotek.com/node/207#logout>

parameters	response
	results